



3000+



1000+



100+



**SB POWER SYSTEMS** is in the field of manufacturing of Total Range of control panel for Elevator system for all kind of industries. We are professionally managed unit With fully equipped workshop to meet most stringent quality standard to cater to our client's requirement. We have been employing best man power with adoption of latest technology. The company is committed to deliver best quality products and services.

We are headed by a sell driven and hardworking mentor, Mr. Chinnappa S Adihal , who is the founder of Our Company and holds Over 10 years at experience in this field. His in depth know-how regarding safety and designing measures teamed up with the process expertise of our team allow us in providing reliable services and satisfactory response to Various elevator and escalator needs of our valued clients across India.

**SB POWER SYSTEMS** is in the field of design, manufacturing and supply of Integrated Elevator Control Panel. We are Authorized Distributor of Inovance technology India pvt ltd. BST NBSL, APSON & TECTRONICS We have established our manufacturing unit at Yelachenahalli Industrial Area Bangaluru All departments like Engineering, Purchase, Sales, Account, Service, Manufacturing, and Personnel & Administration are located under one roof only.

## NICE 3000+ CLOSE LOOP INTEGRATED CONTROLLER

High Performance Serial Integrated Controller for Elevators

### Power Rating

- 2.2Kw. to 45 Kw. 3 Phase 380/400/415V
- 2.2Kw. to 30 Kw. 3 Phase 220V
- 2.2Kw. to 30 Kw. 1 Phase 220V

### Applications

- Simplex, Duplex, 3-8 Group control elevator
- High Speed, Medium speed, Low speed
- Superior elevator, passenger elevator, medical elevator, residential elevator, Disabled elevator etc.
- Elevator rated speed < 4.0 m/sec
- Floor level 1 Each CCB [Car Call Board] can adopt up to max. 16 floors. Above 16 serial link additional CCB up to 64 floors

### Technical Features

- Redundancy control through Multi-CPU's. equipped with CAN Bus, Mod Bus and GSM Communication Technology
- Based on displacement calculation methods derive N velocity profile to achieve optimum direct-to-floor distance control
- Simple 3 wire serial communications to commission duplex group control
- Group control with less than 8 elevators is based on fuzzy logic control theory
- in-built real-time clock to facilitate time-sharing control and elevator management
- Flexible emergency backup power; 220Vac UPS power input makes emergency evacuation easy.
- Automatic identification operation between short-floors
- Handheld Operation Tools: Mini Keypad, PDA, PC to facilitate easy commissioning
- 60 fault codes to facilitate easy diagnostics
- Power on reset run to ground floor is not required
- Shaft position learning is standard
- Easy programming on drive
- we are provide under voltage, overvoltage and earth protection device and line choke for controller safety
- Safety circuit and car door, landing door lock indicator.
- **EN81-1-A3- READY**



# NICE 1000+ Parallel INTEGRATED CONTROLLER

## Parallel/Semi-Serial Integrated Controller for Elevators



### Power Rating

- 2.2Kw. to 45 Kw. 3 Phase 380/400/415V
- 2.2Kw. to 30 Kw. 3 Phase 220V
- 2.2Kw. to 30 Kw. 1 Phase 220V

### Applications

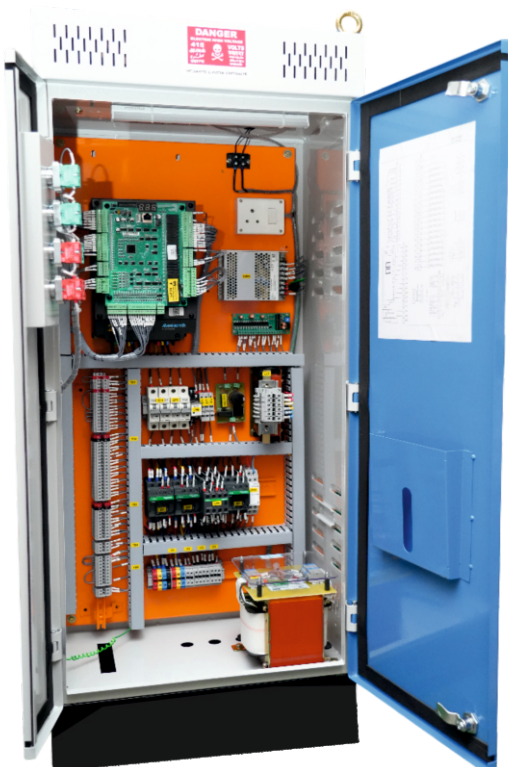
- Simplex elevator, Freight elevator, Villa elevator, duplex elevator
- Max. Speed < 1.75 m/s
- Max. Floor < 8 landings and additional floor card up to 16 floors.
- with semi serial board on car top

### Technical Features

- Shaft learning is standard.
- Direct-to-floor landing. Smooth ride comfort, optimal travel mean time.
- Power on reset run is not needed.
- Practical reliable power Failure auto rescue emergency operation using 220V. 1ph UPS/ARD.
- Automatic identification operation between short-floors with different floor heights.
- Advance door opening and re Levelling using option card.
- 7 segment LED display for floor position indicator and also binary and bcd code output for display.
- Wide variety of door function control to meet different needs in freight lift doors requirement.
- Parallel wiring control for all digital input and output.
- Optimum Exclusive function, quick easy start-up periods.
- Pre-factory default parameters setting facilitate zero parameter setting at site.
- All inputs and outputs are user programmable.
- Suitable for auto door as well as manual door.
- Decelerated and smoothly stop on emergency stop function.
- Rescue power based self-monitored manual break release function for PMSM gearless.
- we are provide under voltage, over voltage and earth protection device for controller.
- 30% size reduction to NICE1000+
- CANbus serial interface for Monarch Ad20 door drive
- **EN81-1-A3- READY**

# NICE 100+ OPEN LOOP INTEGRATED CONTROLLER

## Parallel Integrated Controller for Elevators



### Power Range

- 3.7 Kw. to 11 Kw. 3 Phase 380 to 480vac
- 2.2Kw. to 15 Kw. 1 Phase 220V

### Technical Features

- Max. Speed < 1.00 m/s
- Selectable door control mode (Auto, Manual, Semi-Auto)
- Standard 6 floor full collective, expansion option 12 floor full Collective.
- Programmable I/O's.
- Robust and reliable relay based outputs.
- Comprehensive trip diagnostics.
- Rescue function ready with external single phase 220V UPS.
- Double digit seven segment display.
- Decelerated and smoothly stop on emergency stop function.
- we are providing under voltage, over voltage and earth protection device for controller.

### Performance function

- Smooth ride performance.
- Integrated brake and motor output motor contactors for safety.
- Quick and Easy setup with factory default setting.
- 6 independent S - ramps.
- levelling controls with slip Comp, Auto Torque boost and DC Injection.

## MICROPROCESSOR BASED CONTROL PANEL



### Technical Features

- In-built 110 safety card
- In-built Relay card
- Smart elevator mother card with duplex capability
- Easy to access parameter and error handling with 5 – digit remote display
- All inputs – outputs are changeable
- In – built G+ 9 floor control and G + 20 floor accessibly with semi serial function.
- In – built Audio function
- Card can work with both traction and hydraulic control using single parameter.

## HYDRAULIC CONTROL PANEL



### Technical Features

- In-built 110 safety card
- Suitable for Star-Delta & Dual
- In-built Relay card
- Smart elevator mother card for hydraulic lift
- Easy to access parameter and error handling with 5 – digit remote display
- All inputs – outputs are changeable
- In – built G+ 9 floor control
- In – built Audio function
- Card can work with both traction and hydraulic control using single parameter.

## 3 PHASE MICRO CONTROLLER BASED

### SERVO CONTROLE VOLTAGE STABLIZER



### Air cooled Make:

### SERVO (Indoor type)Capacity:

- 10 Kva - 80 Kva Input voltage range: 300v-470v
- 3phase Output voltage: 400v +/-1%,
- 3 phase Input with Manual bypass
- switch Input voltage High/Low cutoff: Yes
- Over load cutoff: Yes Input Phase Sequence
- working: Yes Frequency: 47Hz-53Hz
- Mode of control: Fully Automatic
- Last Operation default recording: Yes
- Panel control: LCD display Fully Automatically
- Correction Rate: 70v/sec-phase to phase,
- 35v/sec-phase to Netural

# NICE 1000+ SEMI SERIAL INTEGRATED CONTROLLER

## Parallel/Semi-Serial Integrated Controller for Elevators



**Cartop Card**

### Power Rating

- 2.2Kw. to 45 Kw. 3 Phase 380/400/415V
- 2.2Kw. to 30 Kw. 3 Phase 220V
- 2.2Kw. to 30 Kw. 1 Phase 220V

### Applications

- Simplex elevator, Freight elevator, Villa elevator, duplex elevator
- Max. Speed < 1.75 m/s
- Max. Floor < 8 landings and additional floor card up to 16 floors.
- with semi serial board on car top

### Technical Features

- Shaft learning is standard.
- Direct-to-floor landing. Smooth ride comfort, optimal travel mean time.
- Power on reset run is not needed.
- Practical reliable power Failure auto rescue emergency operation using 220V. 1ph UPS/ARD.
- Automatic identification operation between short-floors with different floor heights.
- Advance door opening and re Levelling using option card.
- 7 segment LED display for floor position indicator and also binary and bcd code output for display.
- Wide variety of door function control to meet different needs in freight lift doors requirement.
- Parallel wiring control for all digital input and output.
- Optimum Exclusive function, quick easy start-up periods.
- Pre-factory default parameters setting facilitate zero parameter setting at site.
- All inputs and outputs are user programmable.
- Suitable for auto door as well as manual door.
- Decelerated and smoothly stop on emergency stop function.
- Rescue power based self-monitored manual break release function for PMSM gearless.
- we provide under voltage, over voltage and earth protection device for controller.
- 30% size reduction to NICE1000+
- CANbus serial interface for Monarch Ad20 door drive
- **EN81-1-A3- READY**

## SB POWER ARD SYSTEM

### Automatic Rescue Device



### Automatic Emergency Functioning for mains blackout (Single Phase)

- Model : SBPS
- Capacity : 3.7 KW Upto 30 KW
- AC Input : 220Vac +/- 20% Single Phase Input
- DC Voltage : 12VDC (12V/18Ah\*2pcs), 48 VDC (12V/7Ah \* 4pcs)  
12V/26Ah\*3Pcs 36VDC  
12V/26Ah\*4Pcs 48VDC  
12V/26Ah\*6Pcs 72VDC
- Output Voltage : 220Vac Single Phase 50/60Hz ± 0.1Hz



## Door Header



## INOVANCE ENCODER WITH CABLE



We Also Provide Elevator Full Door

## COP / LOP

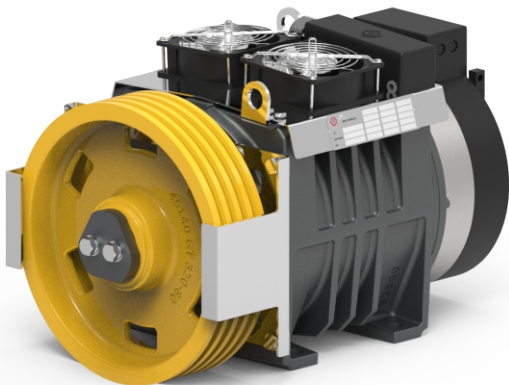


## Intercom System Series

## Door Header



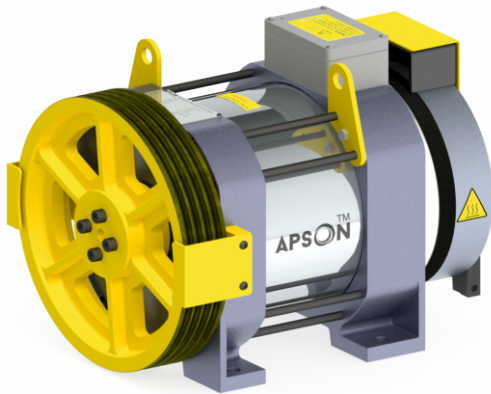
## MONTANARI MOTOR



## MONTANARI



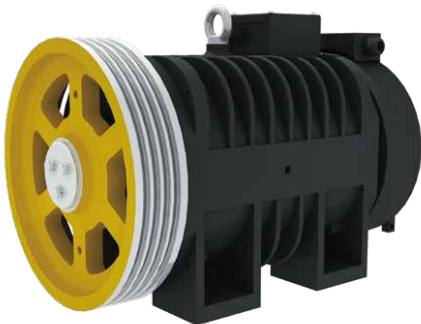
## APSON MOTOR



## HEPU POWER



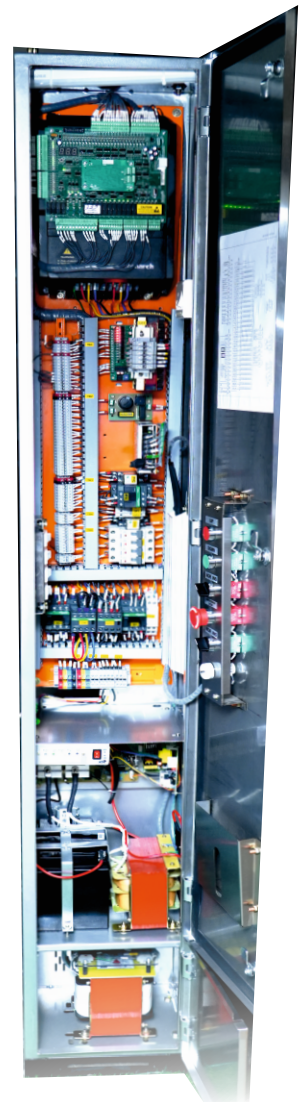
## NBSL MOTOR



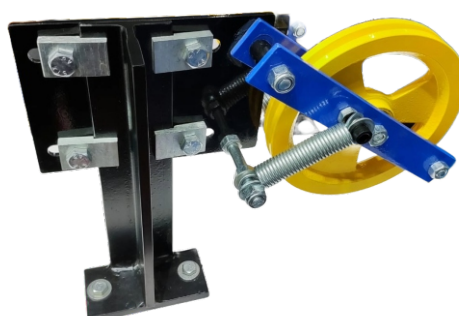
## NBSL MOTOR



## MRL Controller INBUILT ARD



## TECNRONICS OSG



## TECNRONICS MACHINE





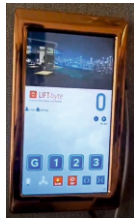
**TECTRONICS**  
TG 24 P 0606 C-325



Side-opening Door  
J2230-T2  
T2230-T2



USHA MARTIN  
ELEVATOR ROPE



Center-opening Door  
J2230-C2  
T2230-C2



4 Core Travelling Cable



7.5KVA/72V DC  
Lift Continuous Duty Cycle



Limit Switch



Single Phase Lift ARD



3 Phase Lift ARD



Pit Switch



Firemans Switch



Alaram



12 Core Display Cable



12 Core Travelling Cable



Weco Door Sensor (IRS)

**SB Power Systems**



#11, Sy. No. 291/2, Ground Floor  
Churchaghatta Cross Yelachenahalli,  
Bangalore – 560062

Branch Office :  
Opp. Tiny Industry, Pisoli Road,  
Kondhwa Budruk, Pune - 411048



[sbpowersystems.in](http://sbpowersystems.in)



**99007 10547**  
**97400 29128**



[sales@sbpowersystems.in](mailto:sales@sbpowersystems.in)